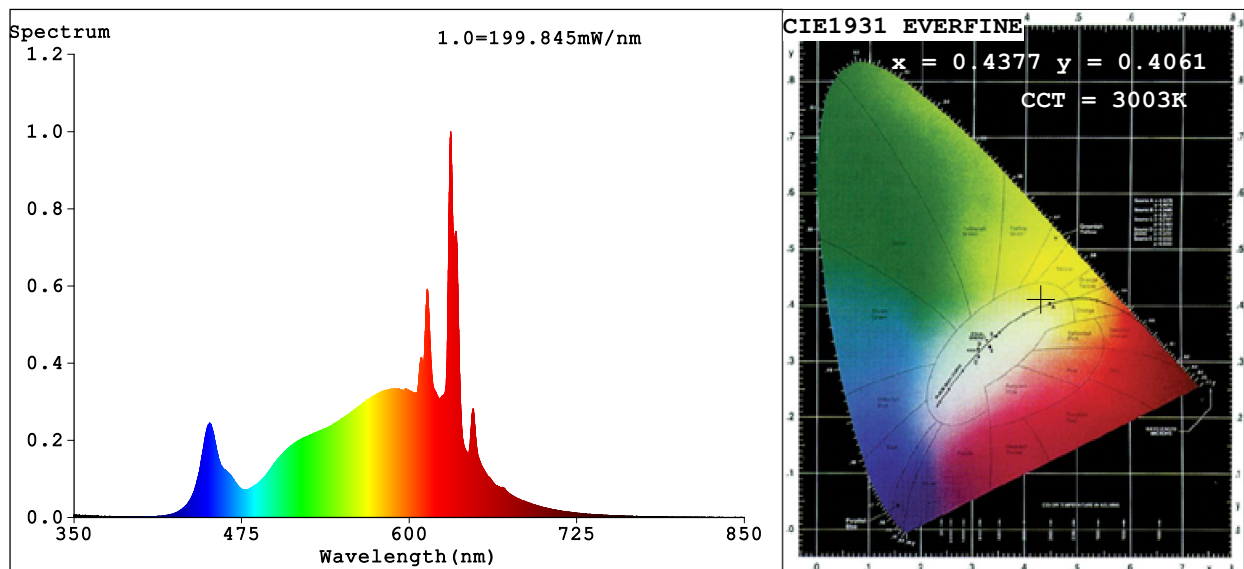


Spectrum Test Report



Color Parameters:

Chromaticity Coordinate: $x=0.4377$ $y=0.4061$ $u'=0.2502$ $v'=0.5223$
 CCT=3003K (Duv=0.0007) Dominant WL:Ld =582.6nm Purity=53.3%
 Ratio:R=24.2% G=73.2% B=2.6%; Peak WL:Lp=630.9nm FWHM=8.2nm
 Render Index:Ra=90.8 CRI=86.9 TM30:Rf=89 Rg=100
 R1 =91 R2 =94 R3 =96 R4 =91 R5 =90 R6 =94 R7 =91
 R8 =79 R9 =50 R10=85 R11=92 R12=76 R13=91 R14=97 R15=86

Photo Parameters:

Flux = 3976 lm Eff. : 131.72 lm/W Fe = 11.61 W

Electrical parameters:

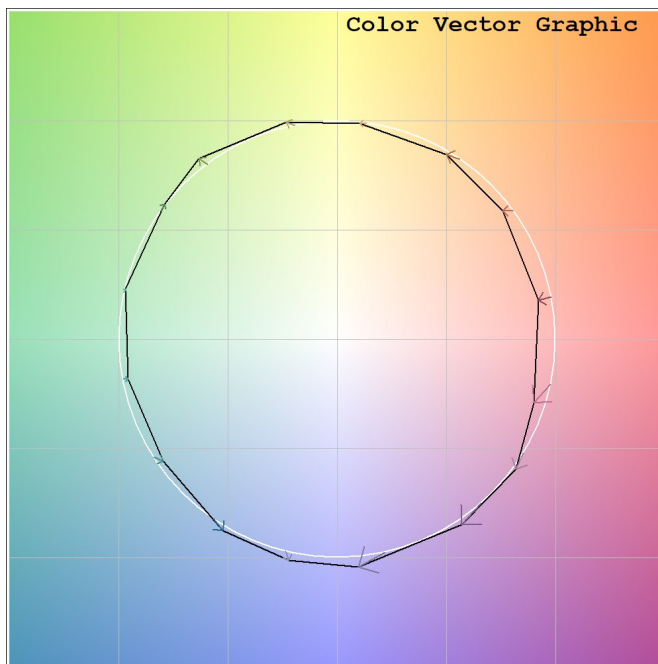
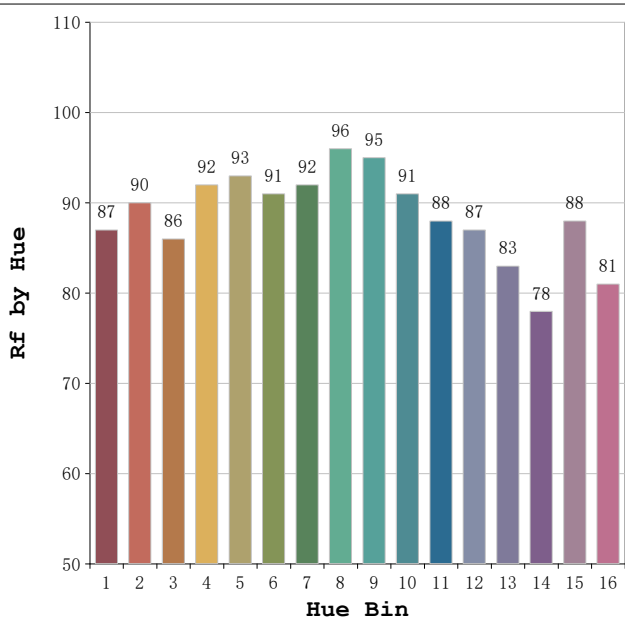
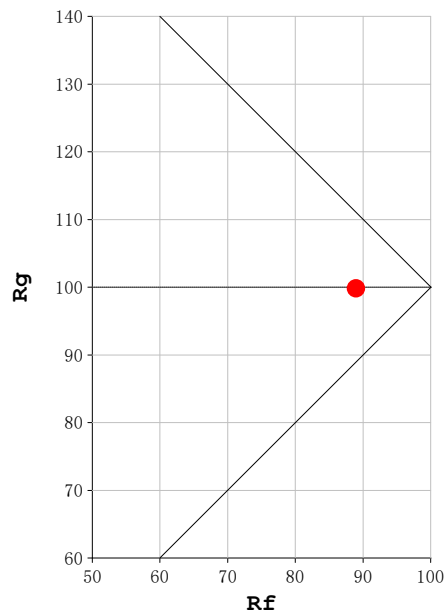
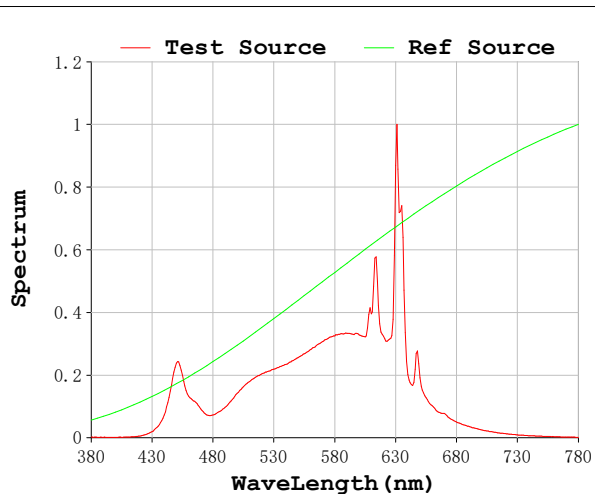
V = 230.05 V I = 0.1372 A P = 30.19 W PF = 0.9566

Status: Integral T = 167 ms Ip = 54394 (83%)

Model:Spotia 30w Balnco
 Tester:Sergio Carneros
 Temperature:20Deg
 Manufacturer:Luz Negra

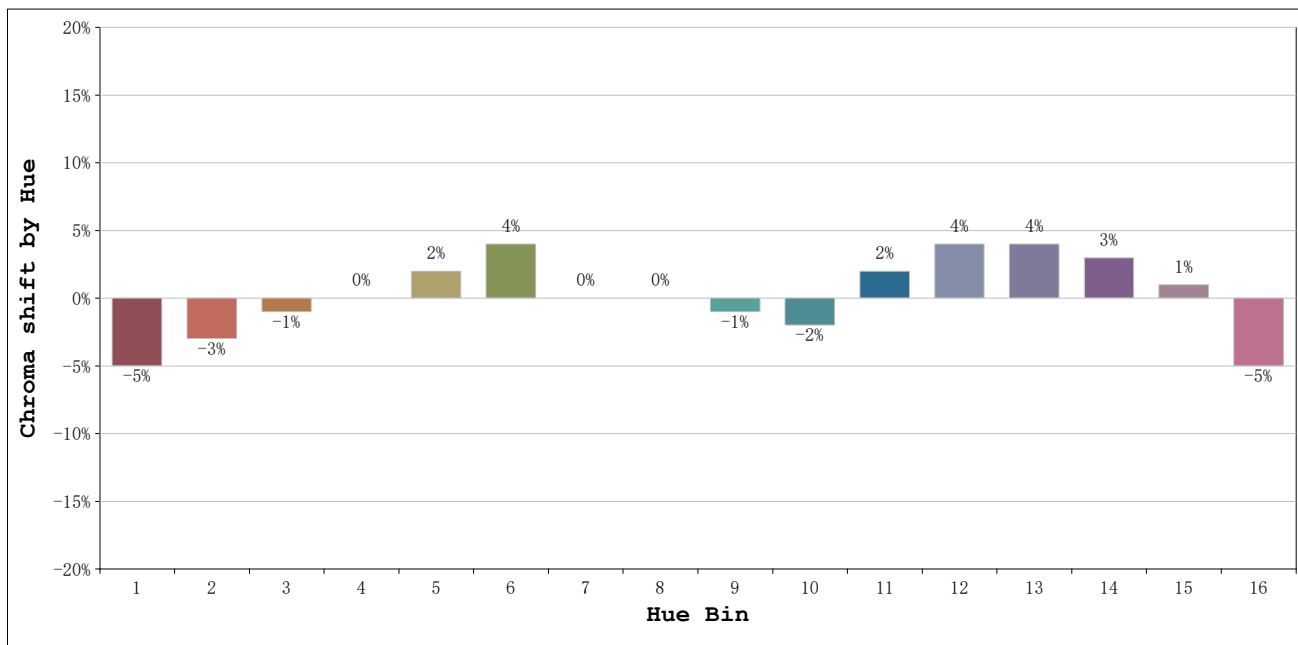
Number:3000k 36°
 Date:2026-03-23 11:15:45
 Humidity:50%
 Remarks:1 unidad

Rf: 89 **CCT: 3003 K** **u': 0.2502**
Rg: 100 **Duv: 0.0007** **v': 0.5223**



Model:Spotia 30w Balnco
 Tester:Sergio Carneros
 Temperature:20Deg
 Manufacturer:Luz Negra

Number:3000k 36°
 Date:2026-03-23 11:15:45
 Humidity:50%
 Remarks:1 unidad



Hue Bin	Hue Angle	Rf	Graphic shift(%)	
			Chroma	Hue
1	0.0° - 22.5°	87	-5	0
2	22.5° - 45.0°	90	-3	3
3	45.0° - 67.5°	86	-1	6
4	67.5° - 90.0°	92	0	3
5	90.0° - 112.5°	93	2	4
6	112.5° - 135.0°	91	4	2
7	135.0° - 157.5°	92	0	-3
8	157.5° - 180.0°	96	0	-1
9	180.0° - 202.5°	95	-1	0
10	202.5° - 225.0°	91	-2	4
11	225.0° - 247.5°	88	2	6
12	247.5° - 270.0°	87	4	3
13	270.0° - 292.5°	83	4	-12
14	292.5° - 315.0°	78	3	-12
15	315.0° - 337.5°	88	1	-7
16	337.5° - 360.0°	81	-5	-9

Model:Spotia 30w Balnco
 Tester:Sergio Carneros
 Temperature:20Deg
 Manufacturer:Luz Negra

Number:3000k 36°
 Date:2026-03-23 11:15:45
 Humidity:50%
 Remarks:1 unidad